



CERTIFICATE of ANALYSIS

Product: Jasmine Hydrosol

INCI: Jasminum Grandiflorum flower extract CAS No:

84776-64-7 Einecs No: 283-993-5 Countries of Origin:

France

Batch Code: 4414702

Best Before End: November 2022

Test	Specification	Result
Appearance	Opalescent to clear liquid	Complies
Colour	Colourless to pale yellow	Complies
Odour	Floral	Complies
Specific Gravity at 20°C (g/ml)	0.995 – 1.005	1
Microbiological CFU/ml		
Total plate count	≤ 1000	< 1
Yeast & Mould (ml)	≤ 100	< 1
Coliforms	≤ 1	< 1
Pseudomonas (/25 ml)	None	Complies

Preservatives: Potassium sorbate (0,2%), Sodium Benzoate (0,2%) Citric acid (0,2%)

Storage: Keep tightly closed, in a cool dry place away from heat and sunlight.

Revision Date: n/a

Shelf life of this product depends very much on storage conditions, particularly temperature and exposure to light and air.

Expiry date must be considered as subjective; the expiry date given here is based on the best of our knowledge and experience of the material when stored under recommended conditions in original unopened containers.

Due to the natural ingredients contained in many of our products, there may be a slight batch to batch variation in the colour, odour or consistency. However, we ensure that this does not affect the quality and efficiency of the products in any way.



Declaration of Allergens

Product: Jasmin Floral Water

INCI: Jasminum Grandiflorum flower extract

We hereby confirm that the above item contains the ingredients listed below. Stated are the total levels added plus levels from natural ingredients. The information is supplied to enable compliance with the Seventh Amendment to the EU Cosmetics Directive (76/768/EEC) and the EU Detergents Directive (648/2004/EC) - Annex III.

Material:	CAS No.	Total Allergen Inclusion Level (%)
Benzyl alcohol	100-51-6	4600 ppm
Amyl cinnamal	122-40-7	-
Cinnamyl alcohol	104-54-1	-
Citral	5392-40-5	-
Eugenol	97-53-0	12 ppm
Hydroxycitronellol	107-75-5	-
Isoeugenol	97-54-1	-
Amylcinnamyl alcohol	101-85-9	-
Benzyl salicylate	118-58-1	-
Cinnamal	104-55-2	-
Coumarin	91-64-5	-
Geraniol	106-24-1	-
Hydroxymethylpentyl 3 - cyclohexenecarboxaldehyde	31906-04-4	-
Anise alcohol	105-13-5	-
Benzyl cinnamate	103-41-3	-
Farnesol	4602-84-0	-
Butylphenyl	80-54-6	-
Methylpropional		
Linalool	78-70-6	22 ppm
Benzyl benzoate	120-51-4	-
Citronellol	106-22-9	-
Hexyl cinnamal	101-86-0	-
Limonene	5989-27-5	-
Methyl 2-octynoate	111-12-6	-
Alpha Isomethyl ionone	127-51-5	-
Evernia prunastri Extract	90028-68-5	-
Evernia Furfuracea extract	90028-67-4	-

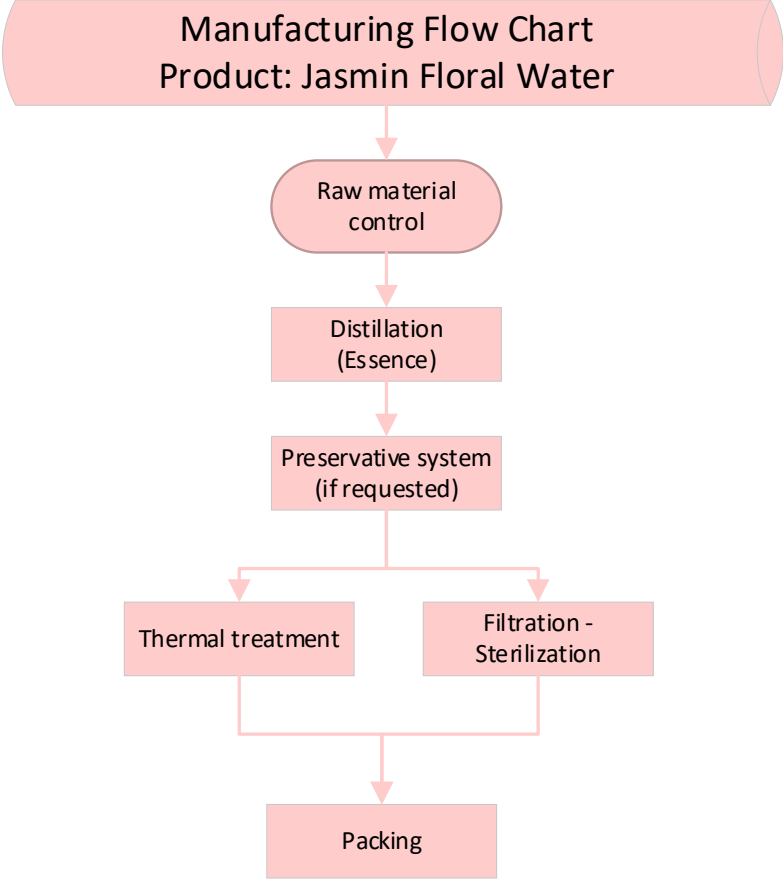
Document created: June 2019



Country of Origin

We, MADAR Corporation Ltd, can confirm that the Country of Origin for Jasmine Floral Water is France.

Document created: June 2019



Document created: June 2019



GMO Compliance Statement

Product: Jasmine Floral Water

MADAR Corporation Ltd confirms that we have received confirmation from our suppliers / manufacturers that the following material supplied, is free of genetically modified materials and components. No ingredients, additives or processing aids of GM origin are used in the processing and purifying of this floral water.

Document created: June 2019

SECTION 1: Identification of the substance/mixture and of the company/undertaking

1.1. Product identifier

Product form : Substance
Substance name : Jasmine Floral Water
Chemical name : Jasminum grandiflorum flower extract

1.2. Relevant identified uses of the substance or mixture and uses advised against

1.2.1. Relevant identified uses

Use of the substance/mixture : Cosmetic

1.2.2. Uses advised against

No additional information available

1.3. Details of the supplier of the safety data sheet

MADAR Corporation Limited
19-20 Sandleheath Industrial Estate,
Fordingbridge,
Hampshire
SP6 1PA

1.4. Emergency telephone number

No additional information available

SECTION 2: Hazards identification

2.1. Classification of the substance or mixture

Classification according to Regulation (EC) No. 1272/2008 [CLP]

Not classified

Adverse physicochemical, human health and environmental effects

To our knowledge, this product does not present any particular risk, provided it is handled in accordance with good occupational hygiene and safety practice.

2.2. Label elements

Labelling according to Regulation (EC) No. 1272/2008 [CLP]

No labelling applicable

2.3. Other hazards

No additional information available

SECTION 3: Composition/information on ingredients

3.1. Substances

Name : Jasmine Floral Water

Name	Product identifier	%
Jasminum grandiflorum flower extract	(CAS-No.) 283-993-5	<= 99.4
Citric Acid	(CAS-No.) 201-069-1 / 77-92-9	<= 0.2
Sodium Benzoate	(CAS-No.) 208-534-8	<= 0.2
Potassium Sorbate	(CAS-No.) 246-376-1	<= 0.2

3.2. Mixtures

Not applicable

SECTION 4: First aid measures

4.1. Description of first aid measures

First-aid measures after inhalation : Remove person to fresh air and keep comfortable for breathing. If you feel unwell, seek medical advice.

First-aid measures after skin contact : Wash skin with plenty of water. If skin irritation or rash occurs: Get medical advice/attention.

First-aid measures after eye contact : Rinse cautiously with water for several minutes. Remove contact lenses, if present and easy to do. Continue rinsing. If eye irritation persists: Get medical advice/attention.

First-aid measures after ingestion : Rinse mouth. Do not induce vomiting. Get medical advice/attention if you feel unwell.

4.2. Most important symptoms and effects, both acute and delayed

No additional information available

4.3. Indication of any immediate medical attention and special treatment needed

Treat symptomatically.

Jasmine Floral Water

Safety Data Sheet

according to Regulation (EC) No. 1907/2006 (REACH) with its amendment Regulation (EU) 2015/830

SECTION 5: Firefighting measures

5.1. Extinguishing media

Suitable extinguishing media : Dry powder. Foam. Carbon dioxide.
Unsuitable extinguishing media : Do not use a heavy water stream.

5.2. Special hazards arising from the substance or mixture

Hazardous decomposition products in case of fire : Toxic fumes may be released. Carbon dioxide. Carbon monoxide.

5.3. Advice for firefighters

Precautionary measures fire : Evacuate area. Eliminate all ignition sources if safe to do so. Stop leak if safe to do so.
Firefighting instructions : Cool laterally with water containers exposed to flames, even after the fire is extinguished.
Protection during firefighting : Do not attempt to take action without suitable protective equipment. Self-contained breathing apparatus. Complete protective clothing.

SECTION 6: Accidental release measures

6.1. Personal precautions, protective equipment and emergency procedures

General measures : Evacuate area. Stop leak if safe to do so. Remove ignition sources.

6.1.1. For non-emergency personnel

Protective equipment : Wear recommended personal protective equipment.
Emergency procedures : Ventilate spillage area.

6.1.2. For emergency responders

Protective equipment : Do not attempt to take action without suitable protective equipment. For further information refer to section 8: "Exposure controls/personal protection".

6.2. Environmental precautions

Avoid release to the environment. Prevent liquid from entering sewers, watercourses, underground or low areas.

6.3. Methods and material for containment and cleaning up

Methods for cleaning up : Clean up any spills as soon as possible, using an absorbent material to collect it. On land, sweep or shovel into suitable containers. Minimise generation of dust. Store away from other materials.
Other information : Dispose of materials or solid residues at an authorized site.

6.4. Reference to other sections

For further information refer to section 13.

SECTION 7: Handling and storage

7.1. Precautions for safe handling

Precautions for safe handling : Ensure good ventilation of the work station. Wear personal protective equipment.
Hygiene measures : Do not eat, drink or smoke when using this product. Always wash hands after handling the product.

7.2. Conditions for safe storage, including any incompatibilities

Storage conditions : Store in a well-ventilated place. Keep cool. Keep away from heat, hot surfaces, sparks, open flames and other ignition sources. No smoking.

7.3. Specific end use(s)

No additional information available

SECTION 8: Exposure controls/personal protection

8.1. Control parameters

No additional information available

8.2. Exposure controls

Appropriate engineering controls:

Ensure good ventilation of the work station.

Hand protection:

Protective gloves

Eye protection:

Safety glasses

Skin and body protection:

Wear suitable protective clothing

Respiratory protection:

In case of insufficient ventilation, wear suitable respiratory equipment

Jasmine Floral Water

Safety Data Sheet

according to Regulation (EC) No. 1907/2006 (REACH) with its amendment Regulation (EU) 2015/830

Personal protective equipment symbol(s):



Environmental exposure controls:

Avoid release to the environment.

Other information:

Do not eat, drink or smoke during use.

SECTION 9: Physical and chemical properties

9.1. Information on basic physical and chemical properties

Physical state	: Liquid
Colour	: Colourless to pale yellow.
Odour	: characteristic.
Odour threshold	: No data available
pH	: No data available
Relative evaporation rate (butylacetate=1)	: No data available
Melting point	: Not applicable
Freezing point	: No data available
Boiling point	: > 60 °C
Flash point	: No data available
Auto-ignition temperature	: No data available
Decomposition temperature	: No data available
Flammability (solid, gas)	: Not applicable
Vapour pressure	: No data available
Relative vapour density at 20 °C	: No data available
Relative density	: ≈ 0.998
Solubility	: Water: fully soluble at 20°C
Log Pow	: No data available
Viscosity, kinematic	: No data available
Viscosity, dynamic	: No data available
Explosive properties	: No data available
Oxidising properties	: No data available
Explosive limits	: No data available

9.2. Other information

No additional information available

SECTION 10: Stability and reactivity

10.1. Reactivity

The product is non-reactive under normal conditions of use, storage and transport.

10.2. Chemical stability

Stable under normal conditions.

10.3. Possibility of hazardous reactions

No dangerous reactions known under normal conditions of use.

10.4. Conditions to avoid

Keep away from heat, hot surfaces, sparks, open flames and other ignition sources. No smoking.

10.5. Incompatible materials

Strong bases. Strong acids. Oxidizing agent.

10.6. Hazardous decomposition products

Under normal conditions of storage and use, hazardous decomposition products should not be produced.

SECTION 11: Toxicological information

11.1. Information on toxicological effects

Acute toxicity (oral)	: Not classified
Acute toxicity (dermal)	: Not classified
Acute toxicity (inhalation)	: Not classified
Skin corrosion/irritation	: Not classified
Serious eye damage/irritation	: Not classified

Jasmine Floral Water

Safety Data Sheet

according to Regulation (EC) No. 1907/2006 (REACH) with its amendment Regulation (EU) 2015/830

Respiratory or skin sensitisation	: Not classified
Germ cell mutagenicity	: Not classified
Carcinogenicity	: Not classified
Reproductive toxicity	: Not classified
STOT-single exposure	: Not classified
STOT-repeated exposure	: Not classified
Aspiration hazard	: Not classified

SECTION 12: Ecological information

12.1. Toxicity

Ecology - general	: The product is not considered harmful to aquatic organisms nor to cause long-term adverse effects in the environment.
Acute aquatic toxicity	: Not classified
Chronic aquatic toxicity	: Not classified

12.2. Persistence and degradability

No additional information available

12.3. Bioaccumulative potential

No additional information available

12.4. Mobility in soil

No additional information available

12.5. Results of PBT and vPvB assessment

No additional information available

12.6. Other adverse effects

No additional information available

SECTION 13: Disposal considerations

13.1. Waste treatment methods

Waste treatment methods	: Dispose of contents/container in accordance with licensed collector's sorting instructions. Must follow special treatment according to local regulation.
-------------------------	--

SECTION 14: Transport information

In accordance with ADR

	ADR
14.1. UN number	Not applicable
14.2. UN proper shipping name	Not applicable
14.3. Transport hazard class(es)	Not applicable
14.4. Packing group	Not applicable
14.5. Environmental hazards	Not applicable
No supplementary information available	

14.6. Special precautions for user

Overland transport

Not applicable

14.7. Transport in bulk according to Annex II of Marpol and the IBC Code

Not applicable

SECTION 15: Regulatory information

15.1. Safety, health and environmental regulations/legislation specific for the substance or mixture

15.1.1. EU-Regulations

No REACH Annex XVII restrictions

Jasmine Floral Water is not on the REACH Candidate List

Jasmine Floral Water

Safety Data Sheet

according to Regulation (EC) No. 1907/2006 (REACH) with its amendment Regulation (EU) 2015/830

Jasmine Floral Water is not on the REACH Annex XIV List

Jasmine Floral Water is not subject to REGULATION (EU) No 649/2012 OF THE EUROPEAN PARLIAMENT AND OF THE COUNCIL of 4 July 2012 concerning the export and import of hazardous chemicals.

Jasmine Floral Water is not subject to Regulation (EC) No 850/2004 of the European Parliament and of the Council of 29 April 2004 on persistent organic pollutants and amending Directive 79/117/EEC

15.1.2. National regulations

No additional information available

15.2. Chemical safety assessment

No chemical safety assessment has been carried out

SECTION 16: Other information

No additional information available

SDS EU (REACH Annex II)

This information is based on our current knowledge and is intended to describe the product for the purposes of health, safety and environmental requirements only. It should not therefore be construed as guaranteeing any specific property of the product



Specification Sheet

Product: Jasmine Floral Water

INCI: Jasminum Grandiflorum Flower Extract

CAS No. 84776-64-7

EINECS No. 283-993-5

TESTS

Appearance:

Odour/taste:

Density at 20°C

SPECIFICATIONS

Limpid liquid, Colourless to opalescent

Floral

0.998 ± 0.002

Microbiological Analysis

Bacteria:

Yeast and mouldiness/ml:

Pseudomonas:

≤ 1000 UFC/ml

≤ 100 UFC/ml

Absence in 25ml

Preservatives: Citric acid (0,2%) + Sodium benzoate (0,2%) + K sorbate (0,2%)

Storage: Keep in a closed container, away from light, between 0 – 4°C

Shelf life: 1 year after manufacture.

Document created June 2019

Product Statement.

Product: Jasmine Floral Water.

We MADAR Corporation Ltd, certify that Jasmine Hydrosol was not submitted to any radiation treatment (gamma or X rays).

- Does not contain animal substances and is then free from BSE.
- Does not contain any of the 4 following esters and is then conform to the legislation of the 22 January 1998: methoxy ethanol, ethoxyethanol, methoxy ethanol acetate and ethoxyethanol acetate.
- Does not contain any phthalates.
- Has not been tested on animals.
- Is free from GMO ingredients.
- Are parabens free.
- Is made with raw materials conform with EC Regulation Nr 1881/2006, which determines the maximum contents for some contaminants, among which the heavy metals, in the food products.
- Is conform with EC regulation Nr 396/2005 modified on pesticides.



Statement on Vegan Suitability

Jasmine Floral Water

INCI: JASMINUM GRANDIFLORUM FLOWER EXTRACT

We confirm to the best of our knowledge that the above product does not contain any animal substances. During production, storage and transport, there is no contact with any extracts of animal origin.

We therefore declare that the product is suitable for vegans.

Document created: 2019